

# Enhanced Computer-Tracking and Recovery Solution from Absolute Software



By adding support for the Windows® 7 Sensor and Location Platform, Absolute Software has accelerated the time-to-market for its products that use location sensors and technologies, simplified development, and given customers enhanced computer-tracking capabilities.

## Solution Overview

Computrace technology by Absolute Software allows customers to manage their IT assets within a single interface – the Absolute Customer Center. Organizations can identify computers that have gone missing, enforce software policies, and maintain a fleet of optimally running devices – regardless if a computer is on or off the company network. Customers can track their computers and handsets and the software installed on them; monitor changes to their locations; remotely delete data; and lock down computers using Intel Anti-Theft technology. And, in the event of theft, Computrace can help you recover your computer.

## Geolocation Tracking

Using the Computrace geolocation feature, organizations can see the physical location of computers and handsets on a map. They can also view the location history of a particular device. Using reports, customers can easily track and locate any devices that have moved off-site, and monitor for behavior that may not comply with government and corporate regulations. Computrace geolocation is the same technology that the Absolute Theft Recovery team uses when they are working to recover a stolen computer.

## The Windows 7 Sensor and Location API

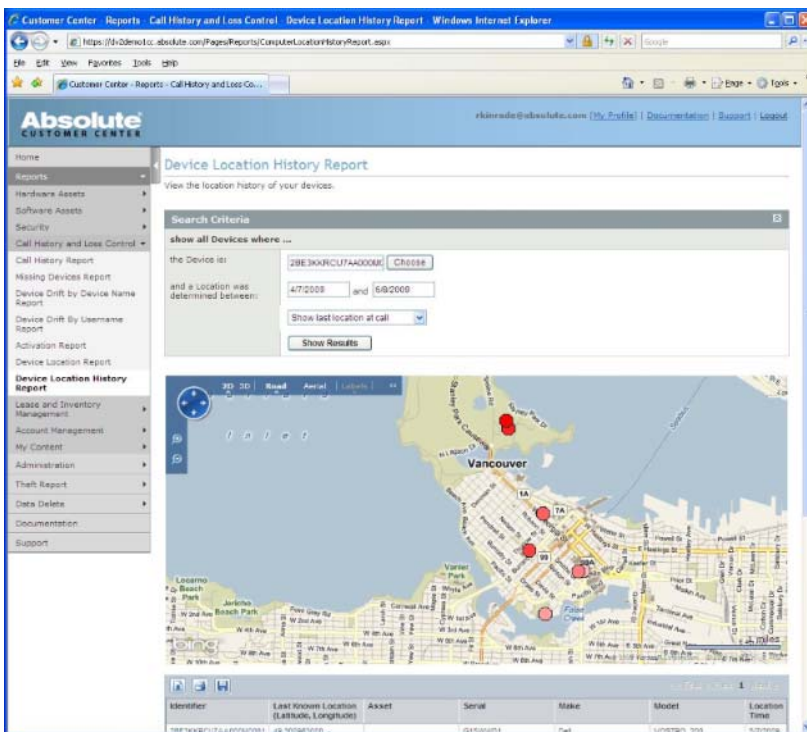
Absolute Software has used the Windows Sensor and Location application programming interface (API), which is part of the Windows 7 operating system. Now customers can see the GPS location of their devices running Windows 7 in the Absolute Software customer portal. Customers can also immediately use any Windows Sensor and Location API-compliant device or technology (such as geo-resolution or Wi-Fi triangulation) once the appropriate provider has been installed.

*“With the Sensor and Location API in Windows 7, we have a powerful new technology that gives us the ability to simplify the geolocation tracking of Windows-based computers, while greatly reducing the time it takes to deliver new solutions to market.”*

Bill Hunka, Director of Business Development, Absolute Software

## Top Reasons Why Customers Chose Microsoft and Absolute Software Solutions

- ... Enhanced computer and device tracking through the integration of current Microsoft technologies and Computrace solutions
- ... The ease of geolocation tracking capabilities that are built into the Windows 7 operating system.
- ... Access the latest technical advancements resulting from the ongoing technology and research partnership between both companies



## How Absolute Software and Its Customers Benefit from the Sensor and Location API in Windows 7

The Windows 7 operating system provides built-in support for location sensors such as GPS devices. With the Windows Sensor and Location API, Absolute Software is now able to offer its customers a solution that provides the following advantages:

**Speeds Time-to-Market.** Absolute Software products can immediately take advantage of any Sensor and Location API-compliant sensor to interface with individual GPS receivers and other sensors—with zero development effort or custom code.

**Provides More Extensive Tracking.** Absolute Software can use the Sensor and Location API to track the location of more computers even better than it could previously. Customers can now pinpoint the location of more of their devices. Integrating with the Windows 7 location API gives the company the ability to locate computers by using technologies other than GPS. Such technologies (including WiFi triangulation, IP geo-resolution, and Cell Tower ID) can be delivered by third-party location providers and seamlessly integrate with Windows.

**Reduces Costs.** By adding support for the API, Absolute Software does not have to develop software for new sensor or location technologies. Because Windows 7 provides for the integration of new location providers in the Location Platform, Absolute Software can use the Windows 7 Location APIs to seamlessly work with future location technologies as they become available, without modifying existing code.

**Eases Development Process.** The Absolute Software development team now has more time to concentrate on higher value applications for its customers. For example, Absolute Software is enhancing Computrace by adding geofencing, a technology that customers can use to define boundaries for computers and to set up an alert if a computer leaves those boundaries.

## Conclusion

Microsoft and Absolute Software partner to develop integrated software solutions that help customers track and recover mobile devices. With the help of the Windows Sensors and Location API, Absolute Software has been able to easily and quickly enhance its computer-tracking solution to give customers powerful new location-tracking capabilities. The company has also reduced overall development costs and may also see a reduction in recovery costs.

© 2009 Microsoft Corporation. All rights reserved.  
This document is for informational purposes only. MICROSOFT MAKES NO WARRANTIES, EXPRESS OR IMPLIED, IN THIS SUMMARY.

## About Absolute Software

Absolute Software, based in Vancouver, British Columbia, is the industry leader in tracking, managing, and securing mobile devices for better data protection and easier IT asset management and computer theft recovery. With its Computrace® and Computrace® LoJack® for Laptops™ solutions, large enterprises, small businesses, and individuals can protect their computing devices and the data on them. The organization has 300 employees, including the Absolute Theft Recovery team, a group of former law enforcement experts and private investigators. Absolute Software is a Microsoft Gold Certified Partner and a launch partner for Windows 7.



## Contact Info

### Absolute Software

Suite 1600, Four Bentall Centre  
1055 Dunsmuir Street  
PO Box 49211  
Vancouver, BC V7X 1K8  
Phone: (800) 220-0733  
<http://www.absolute.com>

Primary business contact:

**Bill Hunka**  
Director of Business Development  
Phone: +1 604.628.5116 ext 116  
E-mail: [bhunka@absolute.com](mailto:bhunka@absolute.com)

Primary technical contact:

**Bill Gordon**  
Phone: +1 604.730.9851 ext 171  
E-mail: [bgordon@absolute.com](mailto:bgordon@absolute.com)

### Microsoft Corporation

One Microsoft Way  
Redmond, WA 98052 USA  
<http://www.microsoft.com>

Business contact:

**Dan Moore**  
Business Development Manager  
Phone: +1 425.704.0334  
E-mail: [danmoore@microsoft.com](mailto:danmoore@microsoft.com)

Primary technical contact:

**Leon Braginski**  
Senior Program Manager  
Phone: +1 425.722.0957  
E-mail: [leonbr@microsoft.com](mailto:leonbr@microsoft.com)